

Certain areas of Oita City centers are designated as zones in which bicycles/motorcycles are not allowed to be parked from April 1st, 2011.

Oita City has established a city ordinance to designate certain areas of Oita City centers in which bicycles/motorcycles are not allowed to park from April 1st, 2011 in order to ensure traffic and safety for pedestrians and a comfortable living environment for citizens. Accordingly, all of Chuomachi, a part of Funaicho, a part of Kanaikemachi and a part of Suehiromachi have been designated as **No Bicycles/Motorcycles Parking Zone**.

If bicycles/motorcycles are left within the Zone for a certain period of time even after a warning and instructions are issued, they will be immediately removed and impounded.

To claim your impounded bicycle/motorcycle, you must pay storage fee (¥1,000 for a bicycle, ¥2,000 for a motorcycle.)

*“Bicycles/motorcycles” means bicycles and motorized bicycles that have a 50cc engine or under.

In Chuomachi the City has set up “**Chuomachi underground bicycle parking lot**” that has a parking capacity of 1002 bicycles/motorcycles.

Please use bicycle parking lots whenever you park your bicycle/motorcycle.

In regard to the No Bicycles/Motorcycles Parking Zone:

-You must not leave your bicycle/motorcycle within the **No Bicycles/Motorcycles Parking Zone**.

-If bicycles/motorcycles are found to be left within the **No Bicycles/Motorcycles Parking Zone** for three hours even after a warning and instruction are issued, they are considered illegally parked and will be subject to removal.

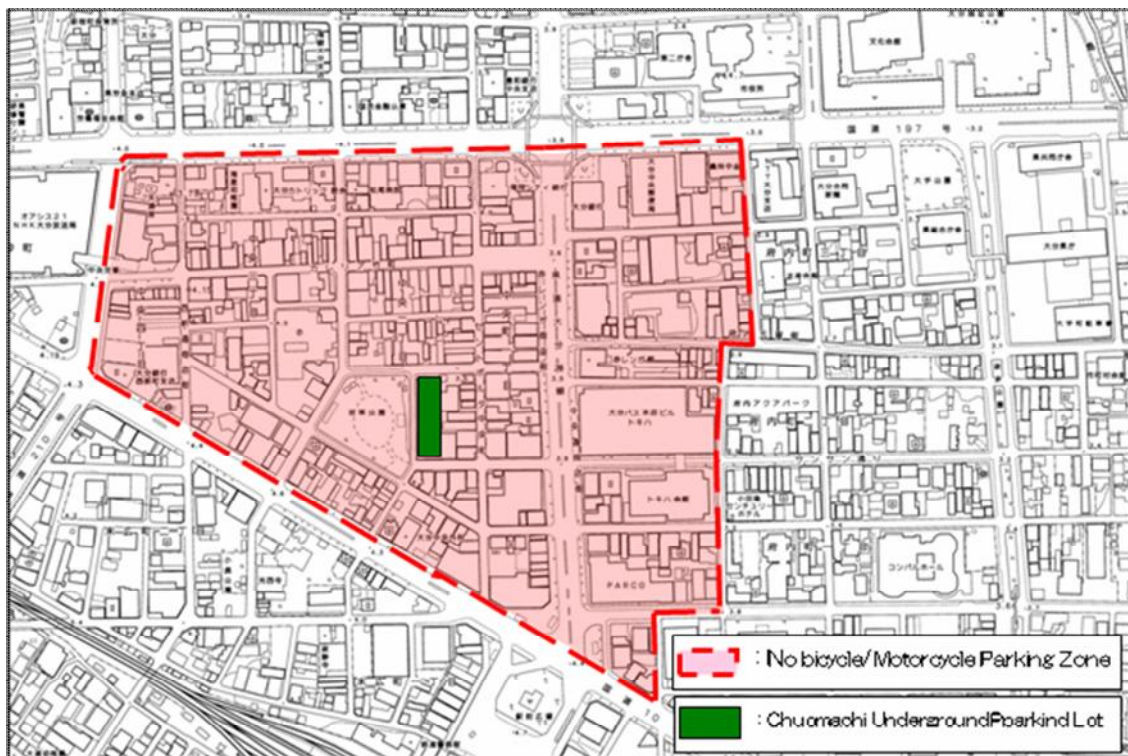
-A storage fee must be paid to claim your impounded bicycle/motorcycle.

-There are guide signs and pavement signs within the **No Bicycles/Motorcycles Parking Zone**.

What is “illegally parked bicycles/motorcycles?”

Illegally parked bicycles/motorcycles refer to those that are parked in locations other than bicycle parking lots and that are left unattended by their users and cannot be moved immediately.

Map of the No Bicycles/Motorcycles Parking Zone in the City centers:



All bicycles and motorcycles may be parked only at parking lots.

Your understanding and cooperation will be greatly appreciated.

Inquiries into No Bicycles/Motorcycles Parking Zone:

Bicycles Comprehensive Control Section, Urban Transportation Planning Division
(Toshikotsutaisaku-ka) Tel: 097-537-5690